



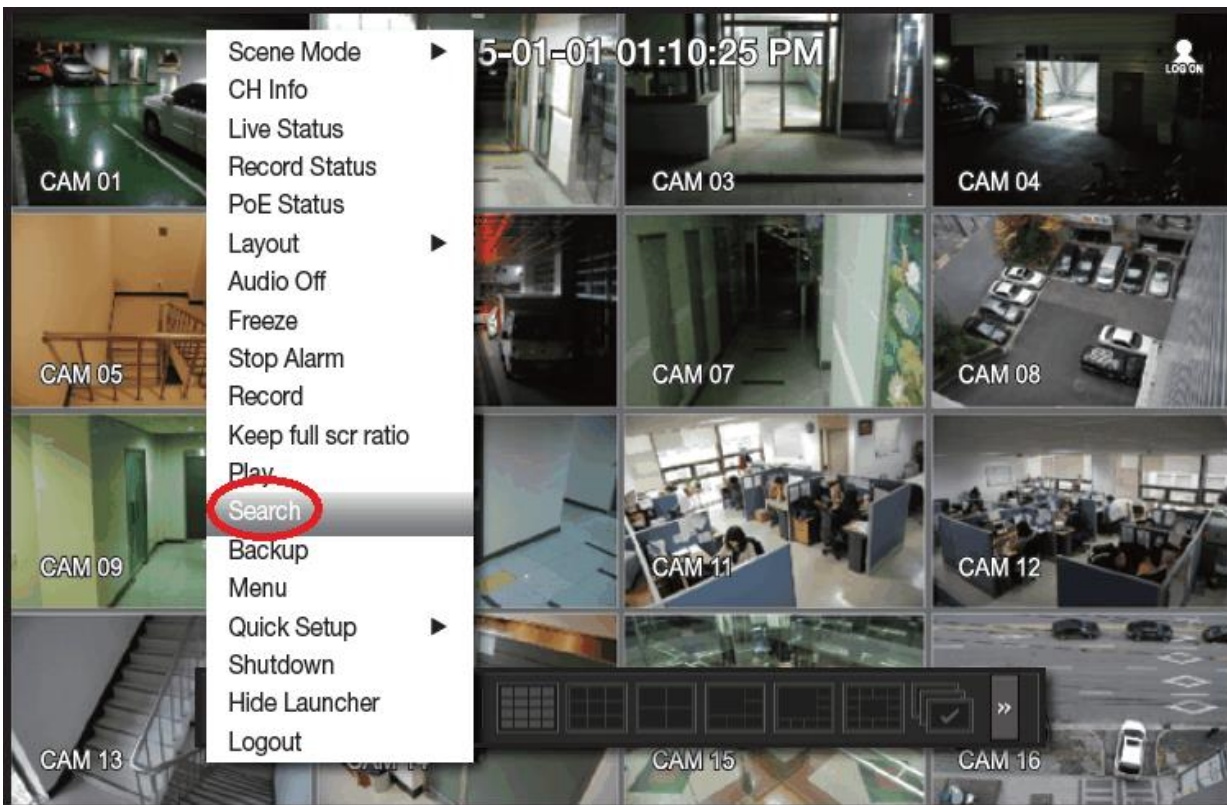
**EOS AUSTRALIA PTY LTD**  
We strive to give peace of mind to millions.

# **SRN Search & Backup**

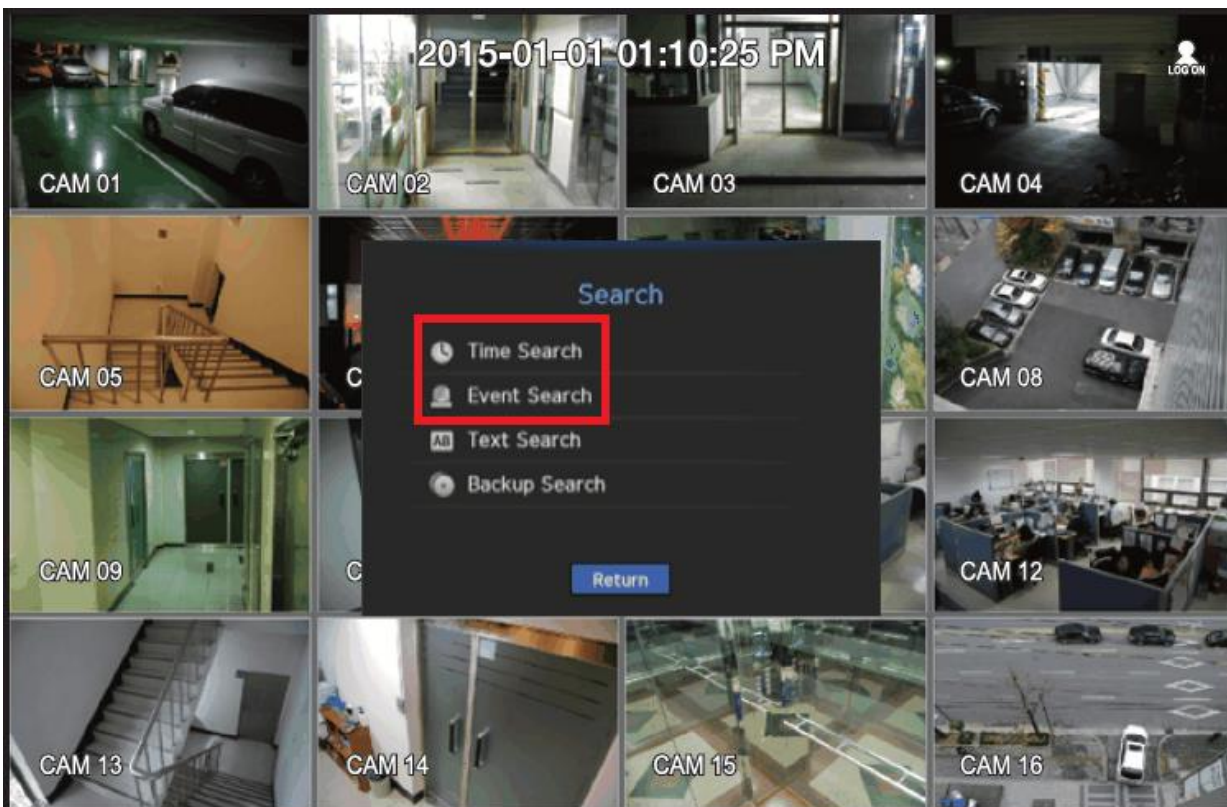
**1/04/2016**

**Ver. 1.0**

# Search



From the main screen right click on the mouse and go to **[Search]**



# Time Search

The screenshot displays the 'Time Search' interface. At the top, a date '2015-01-01' is selected in a calendar view (1). Below it, a time '02:51:46' is selected in a dropdown menu (2). A list of cameras (CAM 01 to CAM 08) is shown, with CAM 01 and CAM 03 selected (3). The data timeline shows colored bars representing recording events: a blue bar for CAM 01, a green bar for CAM 03, and a red bar for CAM 05 (4). At the bottom, a 'Play' button is highlighted (5).

1. Choose a date from the calendar
2. Select the time
3. Pick the camera you want to look at
4. If there are footage present, you will see a colored bar as indicator. Depends on the type of recording the color may be varied
5. Click **[Play]** when ready

# Event Search

The screenshot shows the 'Event Search' interface. At the top, there are three red circles with numbers 1, 2, and 3. Circle 1 is around the 'CH 1' dropdown menu. Circle 2 is around the date '2014-01-01' and a calendar icon. Circle 3 is around the 'Event Type' dropdown menu, which is set to 'Setup'. Below these are buttons for 'Overlapped Data', 'List0', 'Go to First', and 'Go to Last'. On the left, there is a video preview window showing a car in a garage with the timestamp '2014/01/01 07:35:11'. In the center, there is a table with the following data:

No.	Date/Time Preview	Event
1	07:35:11 ~ 08:18:40	Schedule

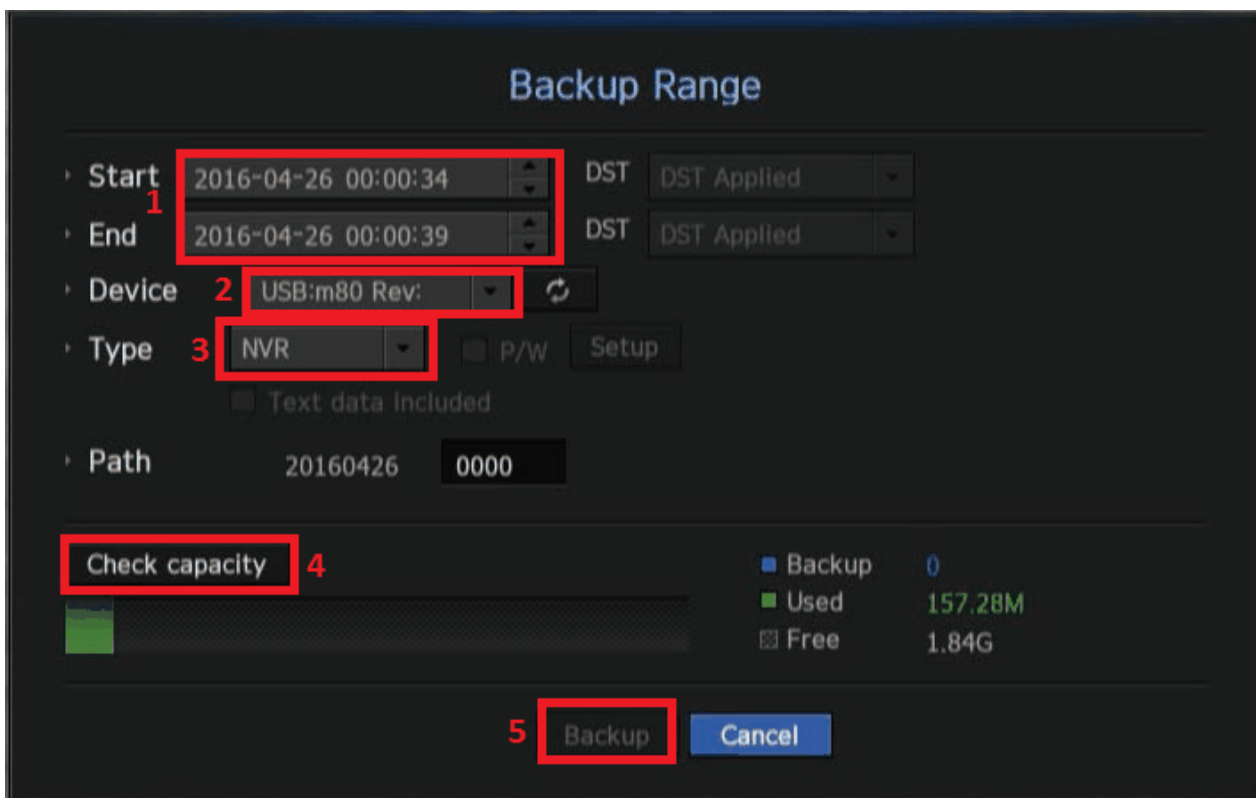
At the bottom, there are two buttons: 'Play' and 'Return'. A red circle with the number 5 is around the 'Play' button.

1. Select the channel you want to look at
2. Select the date from the calendar
3. Choose an event type you want to search from the list
4. The table will automatically update itself depends on the event type, choose a particular event you want to see
5. Click **[Play]** when ready

# Backup



From the main screen right click on the mouse and go to **[Backup]**



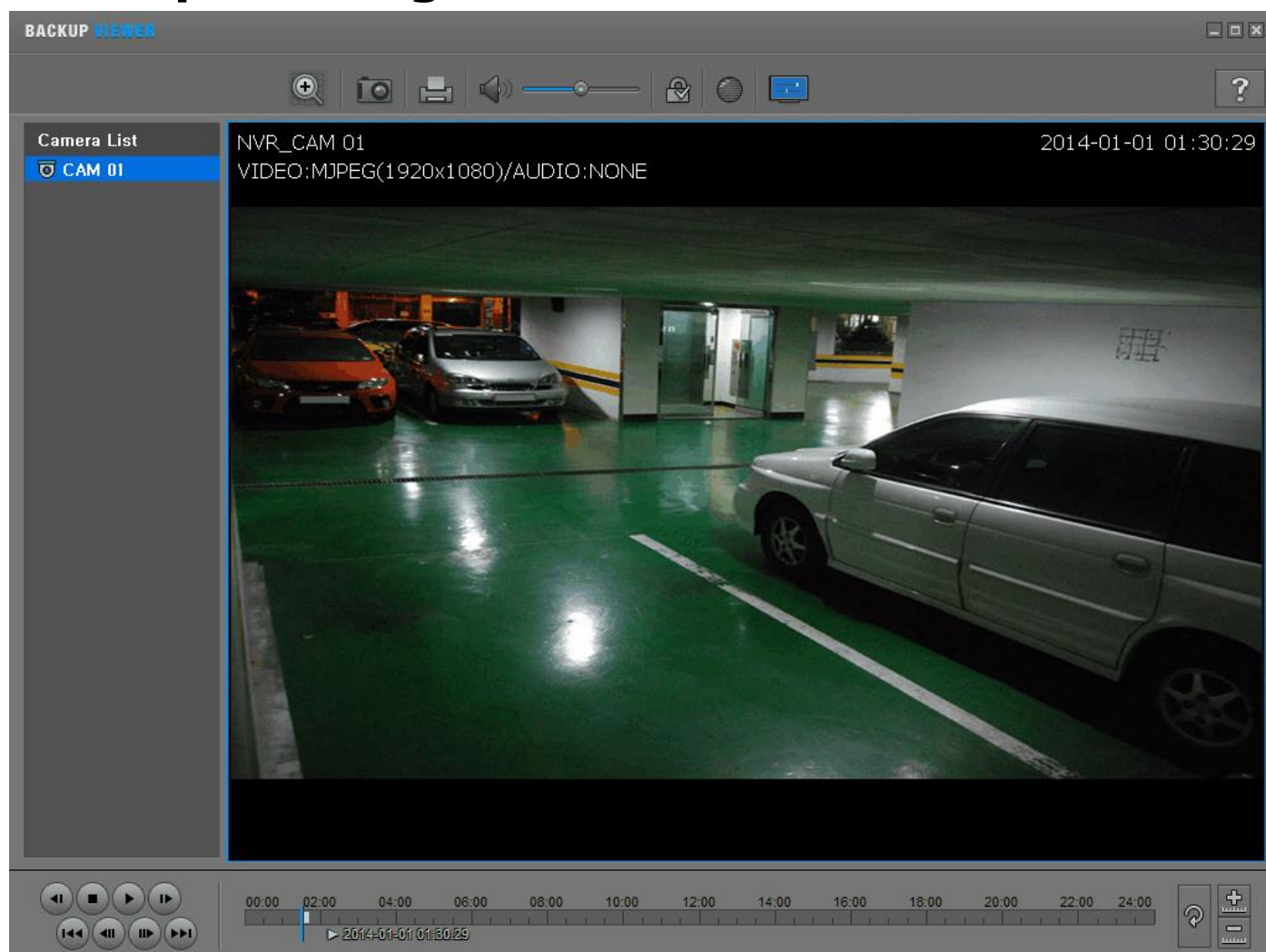
1. Select the start and end time
2. Make sure the NVR pick up the USB that was inserted into the USB port
3. Choose the backup file type that you want to save as
4. Click Check Capacity to calculate how much storage is required
5. Click **[Backup]**

**NVR** Can only be played back using the NVR itself

**AVI** Standard video format, can be played on almost any computer as long as the codec is installed (**Not all model supports AVI**)

**SEC** Samsung propitiatory format, can only be played on **Windows** OS, it comes with its own player, with full speed control, multiple camera playback, snapshot as well as printing and watermarks

## Backup Viewing



If you backup as SEC, there will an exe file and sec file present, simply double click the exe to start the footage