



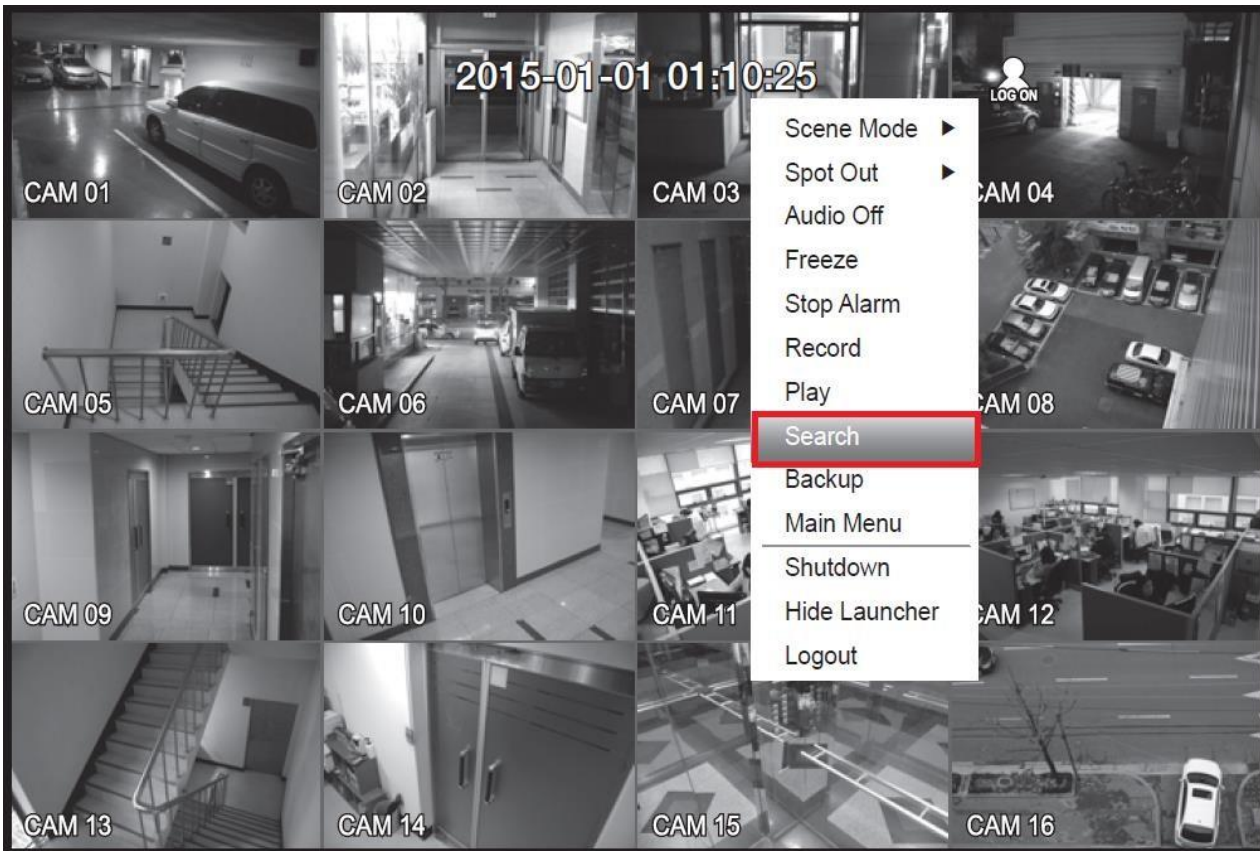
EOS AUSTRALIA PTY LTD
We strive to give peace of mind to millions.

SRD Search & Backup

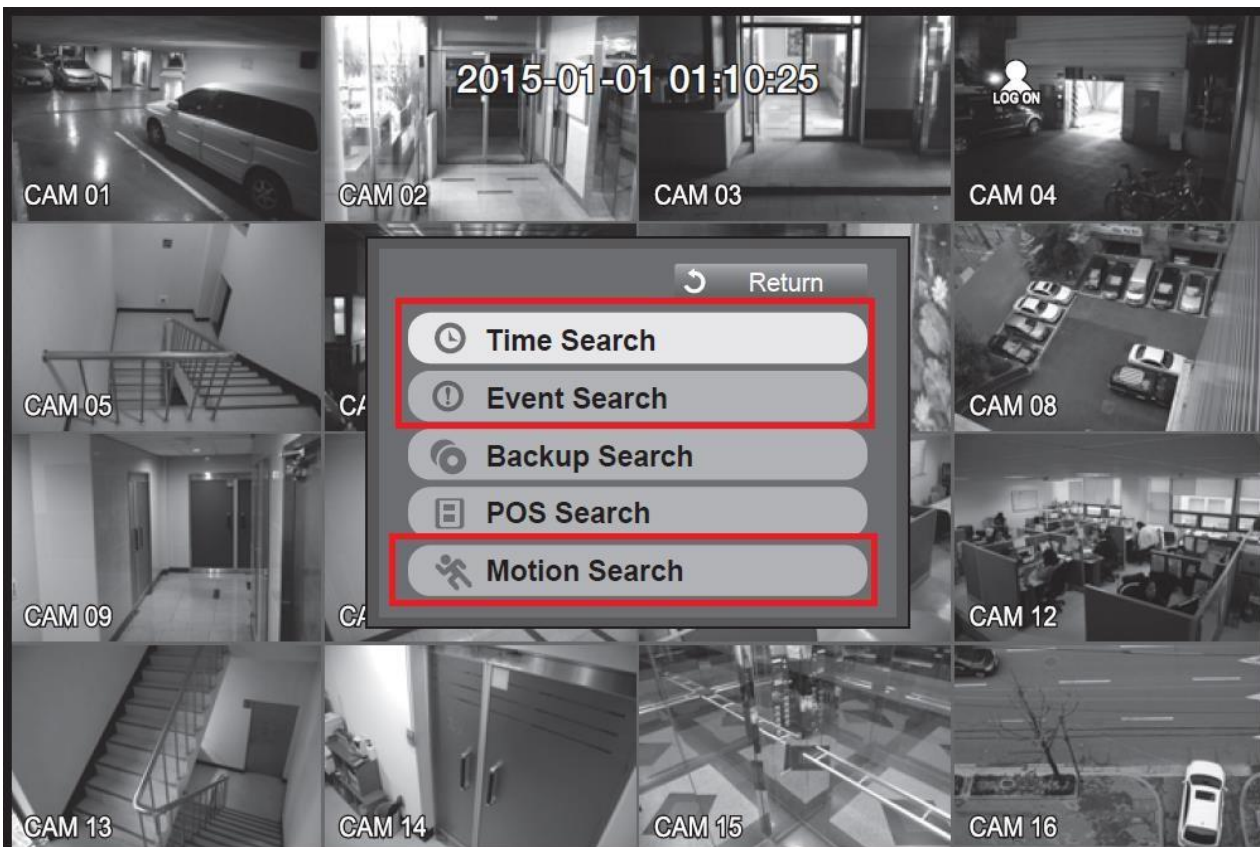
1/04/2016

Ver. 1.0

Search



From the main screen right click on the mouse and go to **[Search]**



Time Search

The screenshot displays the 'Time Search' interface. At the top left, a date '2015-01-01' is selected in a calendar view (labeled 1). Below it, a time '00:01' is selected (labeled 2). A list of cameras (CAM 01 to CAM 07) is shown, with CAM 02 selected (labeled 3). A timeline below the camera list shows recording activity for each camera, with a colored bar for CAM 02 (labeled 4). At the bottom, a 'Play' button (labeled 5) and a 'Return' button are visible. The interface also includes 'Go to First', 'Go to Last', 'Zoom In', and 'Zoom Out' buttons, and a 'Previous/Next Page' button.

1. Choose a date from the calendar
2. Select the time
3. Pick the camera you want to look at
4. If there are footage present, you will see a colored bar as indicator. Depends on the type of recording the color may be varied
5. Click **[Play]** when ready

Event Search

① Event Search

▼ 1


◀ ▶ 📅 2

▼ 3

Overlapped Data ▼

Go to First

Go to Last



2015/01/01 00:01:22

No.	Date/Time Preview	Event
3	02:47:54 ~ 02:48:59	Motion
2	00:39:06 ~ 00:40:30	Motion
1	00:01:22 ~ 00:02:28	Motion
	4	

◀ ▶ Previous/Next Page

1. Select the channel you want to look at
2. Select the date from the calendar
3. Choose an event type you want to search from the list
4. The table will automatically update itself depends on the event type, choose a particular event you want to see
5. Click **[Play]** when ready

SRD Search & Backup

EOS Australia PTY LTD


Motion Search

Motion Search

Channel CAM 01 1 Motion Region All Area 2 Setup

3 Date/Time 2015-01-01 03:41:18 2015-01-01 05:11:44 4 Search

Overlapped Data List1 Go to First Go to Last



2015/01/01 01:01:30

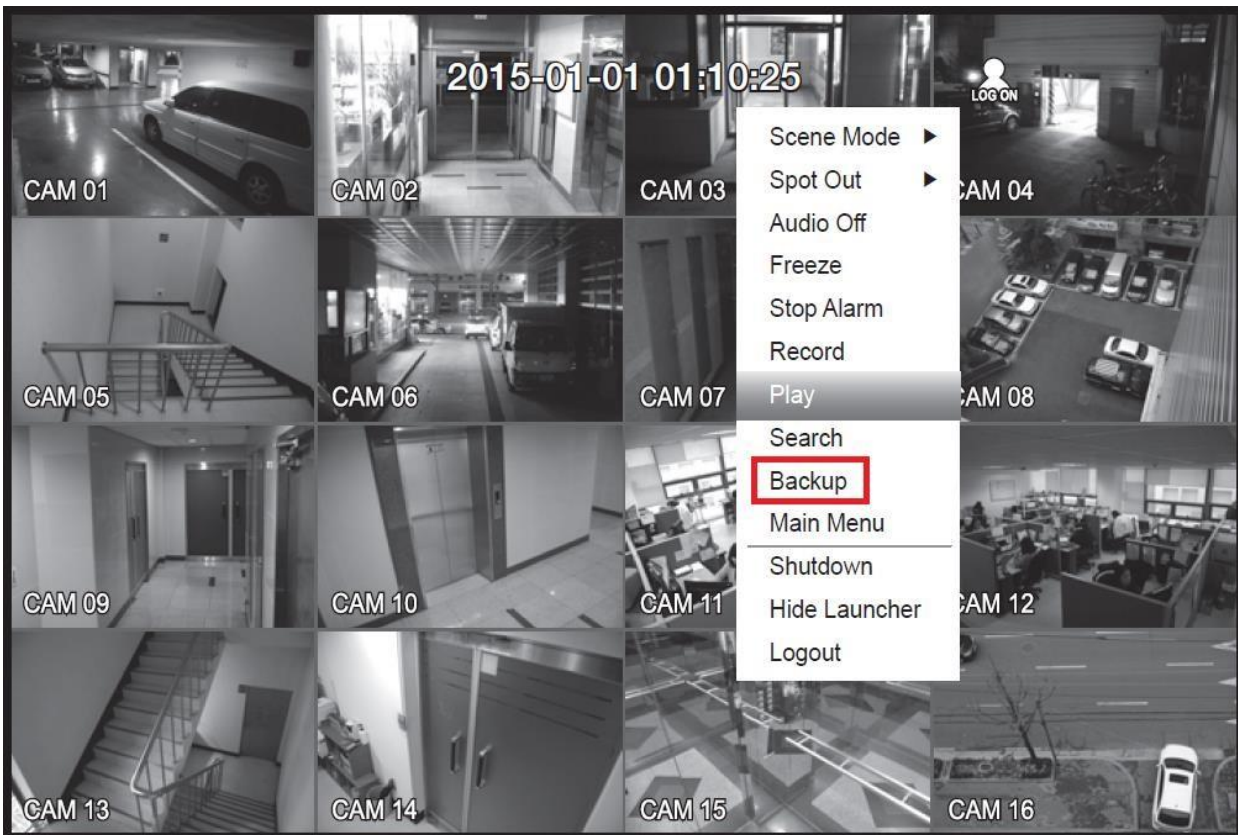
No.	Start Time
7	01:01:30
6	01:01:25
5	5 01:01:20
4	01:01:15
3	01:01:10
2	01:01:05
1	01:01:01

◀▶ Previous/Next Page

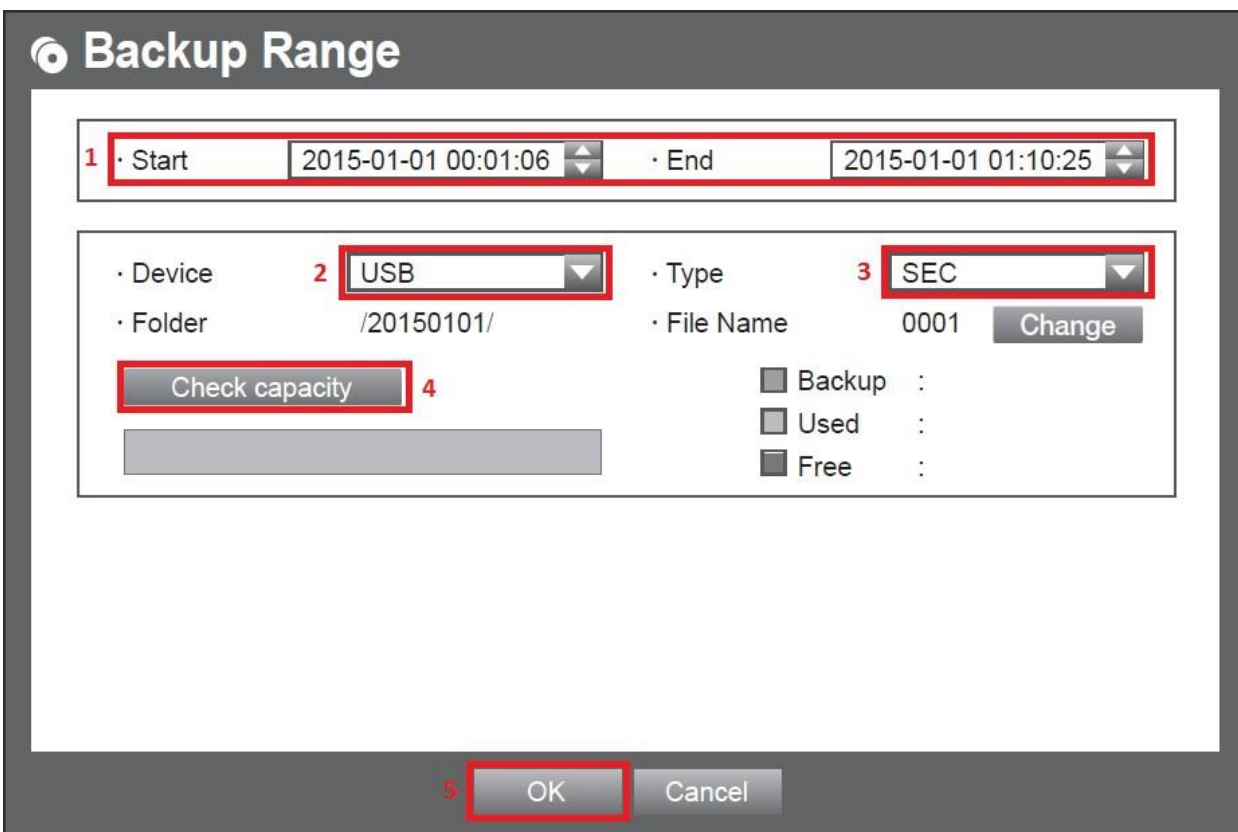
6 Play Return

1. Select the channel you want to look at
2. Select the motion area to search for the camera
3. Select time and date
4. Click **[Search]** to look for motions
5. The table will populate with footage for that area that is been searched
6. Click **[Play]** when ready

Backup



From the main screen right click on the mouse and go to **[Backup]**



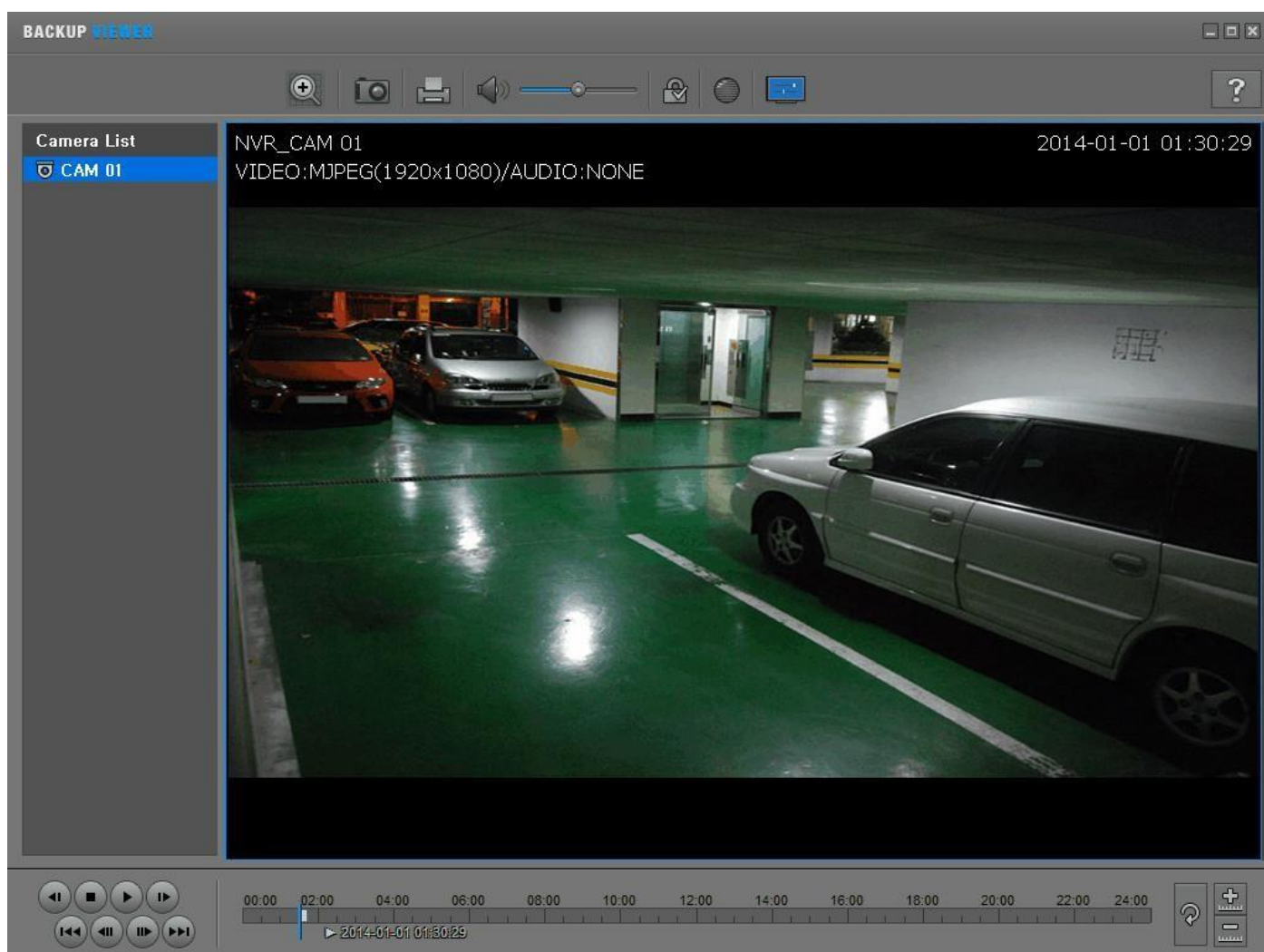
1. Select the start and end time
2. Make sure the NVR pick up the USB that was inserted into the USB port
3. Choose the backup file type that you want to save as
4. Click Check Capacity to calculate how much storage is required 5. Click **[Backup]**

NVR Can only be played back using the NVR itself

AVI Standard video format, can be played on almost any computer as long as the codec is installed (**Not all model supports AVI**)

SEC Samsung proprietary format, can only be played on **Windows** OS, it comes with its own player, with full speed control, multiple camera playback, snapshot as well as printing and watermarks

Backup Viewing



If you backup as SEC, there will an exe file and sec file present, simply double click the exe to start the footage