



EOS AUSTRALIA PTY LTD
We strive to give peace of mind to millions.

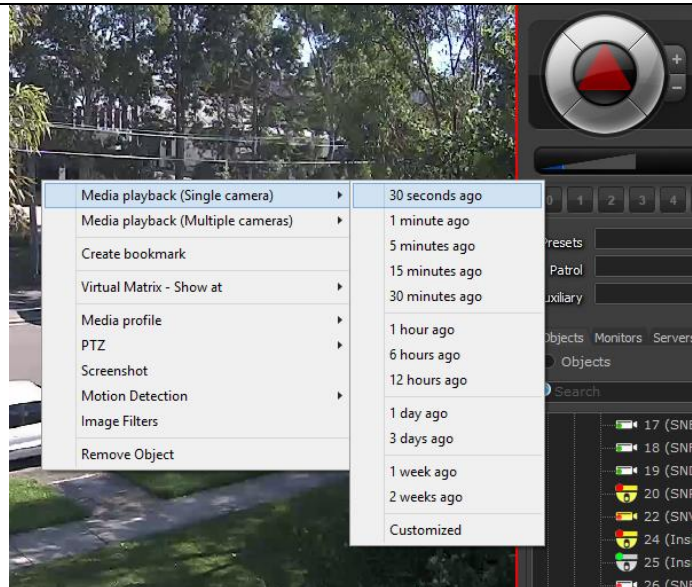
Playing Footage

11/04/2016

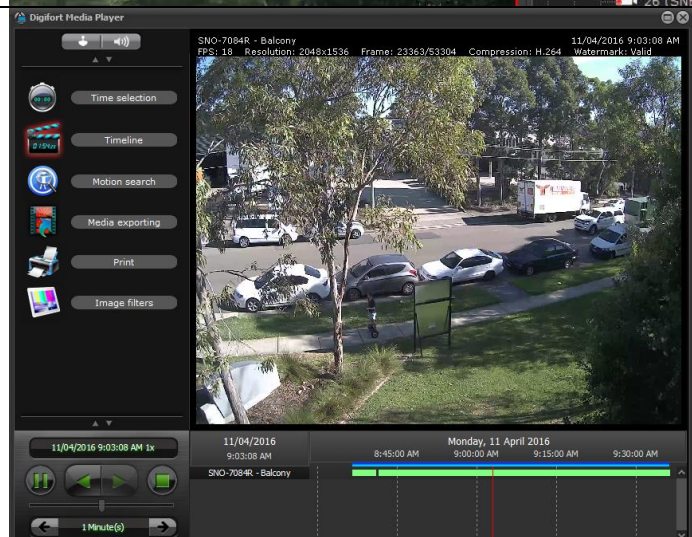
Ver. 2.0



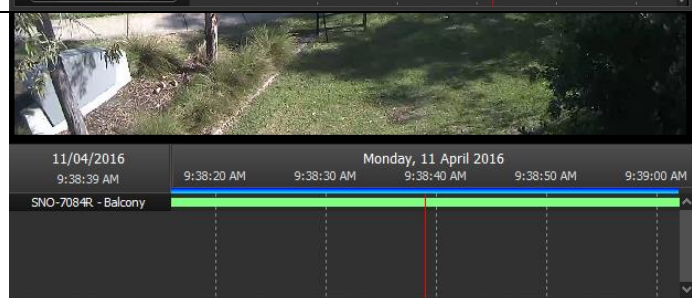
Double click the 'Surveillance Client' icon on the desktop.




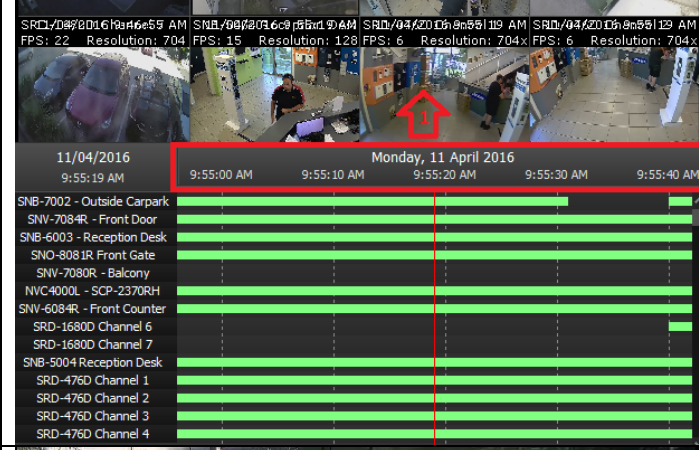
Right click a camera on the screen and select 'Media Playback' to playback previous recorded footage.

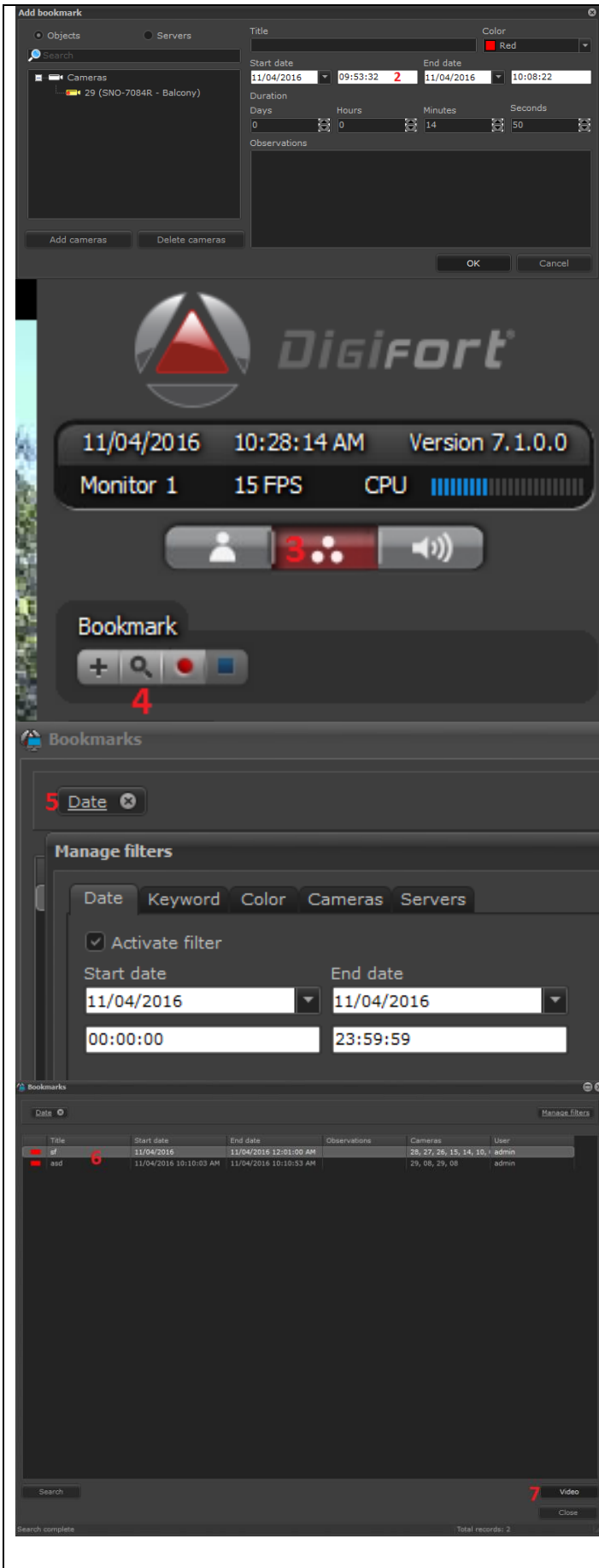


A 'Digifort Media Player' screen should now pop up.



Press [+] and [-] buttons on the keyboard to zoom in and out of the Footage Timeline. This will give you a more accurate reading.

	<ol style="list-style-type: none"> 1. Date, Time and Speed of playback 2. Pause button 3. Backwards Play 4. Forwards Play 5. Stop 6. Speed control, up to 512x fast or 512x slow motion 7. The media player now allows the footage to jump x minutes forward or backwards
	<p>Zooming in on Megapixel Cameras</p> <p>Method 1: Right click and drag mouse over the area you want to zoom in on.</p> <p>Method 2: Use the scroll wheel of the mouse to zoom in and out</p> <p>Once in zoom mode, an additional zoom control window will appear on bottom right. You can control the zoom area from here. To exit zoom mode, double click on the zoom control windows.</p>
	<ol style="list-style-type: none"> 1. Pull the timeline frame up to reveal more timelines for cameras, when playing back multiple cameras at once. 2. Alternatively, use the scrollbar on the right to see more timelines for multiple cameras.
	<p>Bookmark</p> <p>Video bookmark feature allows a faster marking of important events for later easier search</p> <ol style="list-style-type: none"> 1. Right click on the timeline

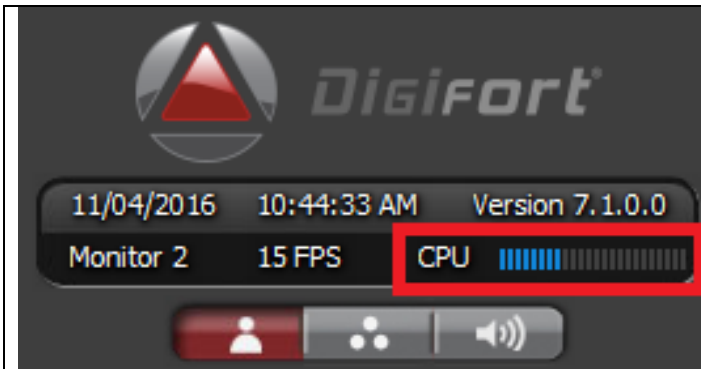


2. Choose the time you want to bookmark

3. Click the middle button on the surveillance client main interface
4. Press search button

5. Click the Date button to allow selection of time and date that was previously bookmarked

6. Choose a bookmark
7. Click video to playback the footage that was previously bookmarked



Always keep an eye out for the CPU usage on the top right of the Surveillance Client. We recommend you keep the CPU usage below 75%.

To preserve CPU usage on the Surveillance Client, we suggest you create a separate Visualization stream independent of your Recording that is a lower resolution and lower frame rate than your Recording stream.